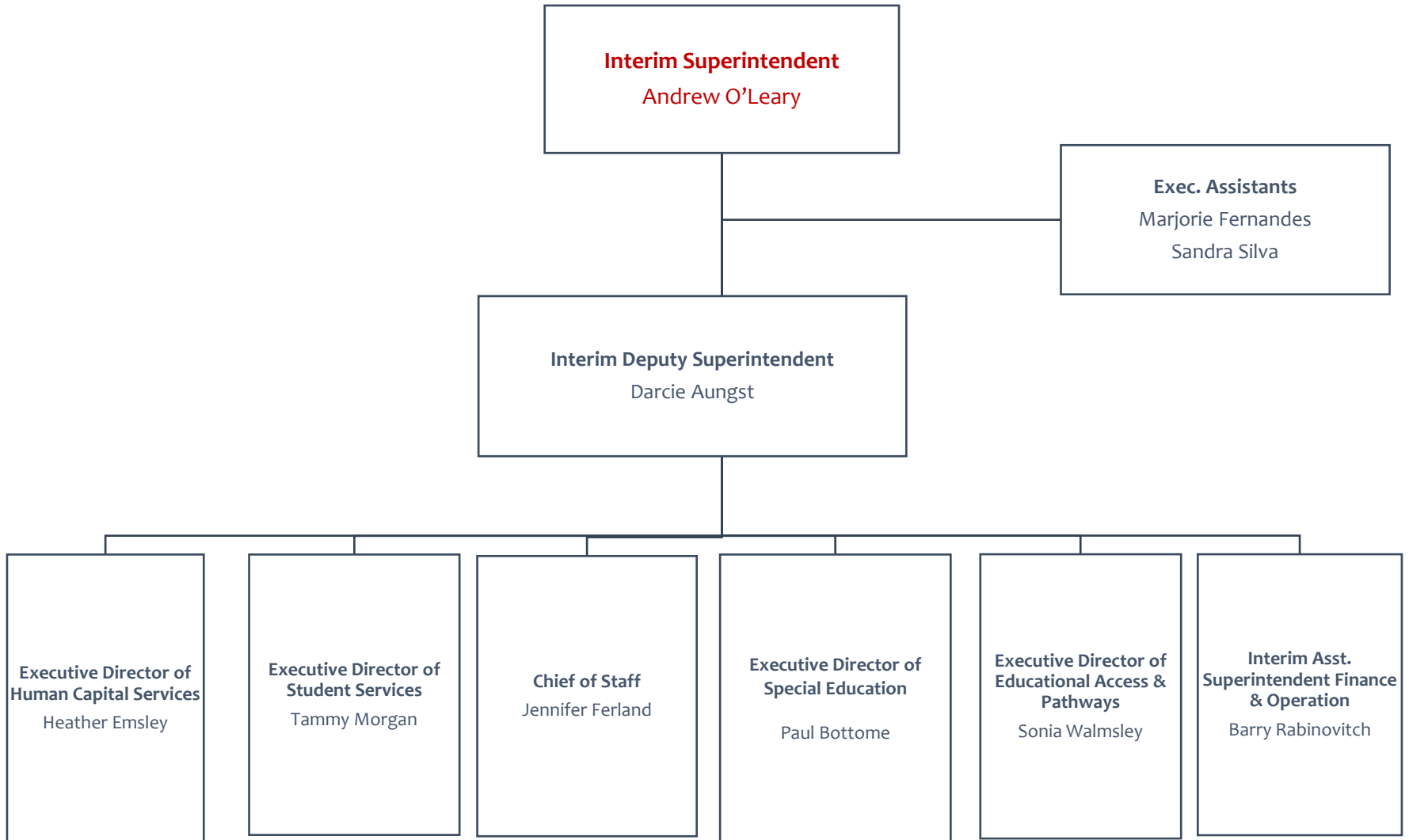
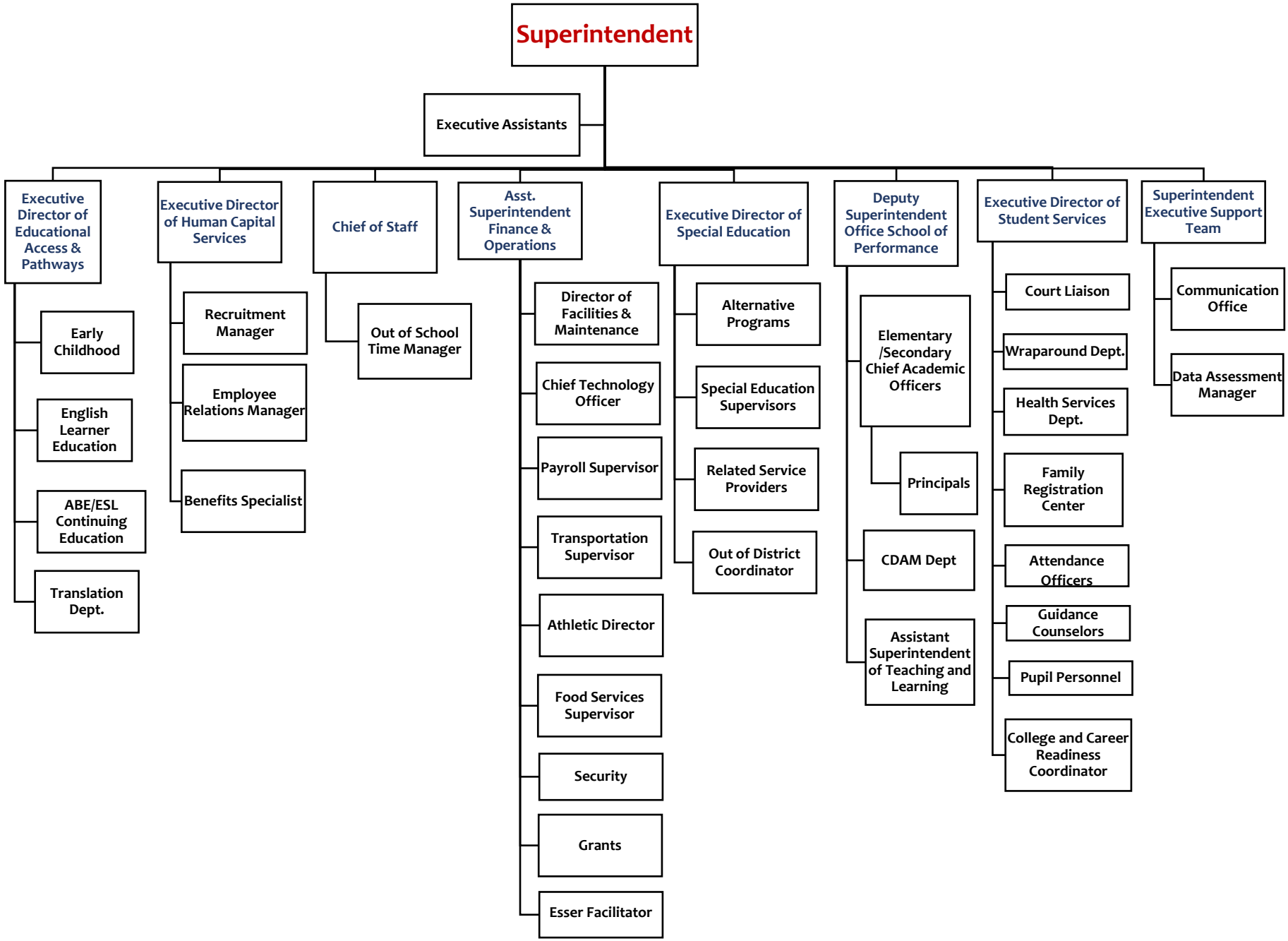


Organizational Chart SY 2023-2024



Core Leadership Team





Superintendent

Executive Assistants

Executive Director of Educational Access & Pathways

- Early Childhood
- English Learner Education
- ABE/ESL Continuing Education
- Translation Dept.

Executive Director of Human Capital Services

- Recruitment Manager
- Employee Relations Manager
- Benefits Specialist

Chief of Staff

Out of School Time Manager

Asst. Superintendent Finance & Operations

- Director of Facilities & Maintenance
- Chief Technology Officer
- Payroll Supervisor
- Transportation Supervisor
- Athletic Director
- Food Services Supervisor
- Security
- Grants
- Esser Facilitator

Executive Director of Special Education

- Alternative Programs
- Special Education Supervisors
- Related Service Providers
- Out of District Coordinator

Deputy Superintendent Office School of Performance

- Elementary /Secondary Chief Academic Officers
- Principals
- CDAM Dept
- Assistant Superintendent of Teaching and Learning

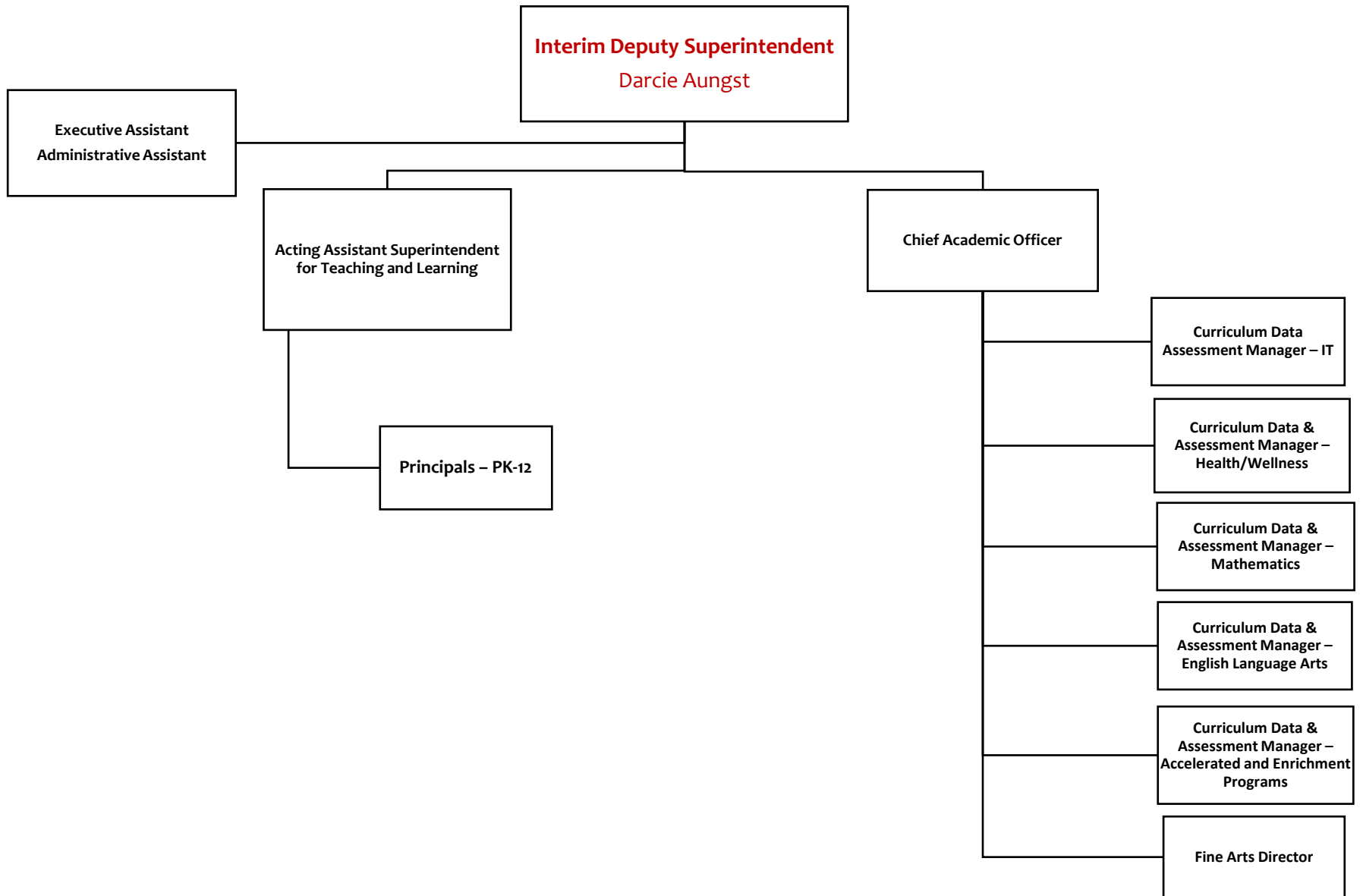
Executive Director of Student Services

- Court Liaison
- Wraparound Dept.
- Health Services Dept.
- Family Registration Center
- Attendance Officers
- Guidance Counselors
- Pupil Personnel
- College and Career Readiness Coordinator

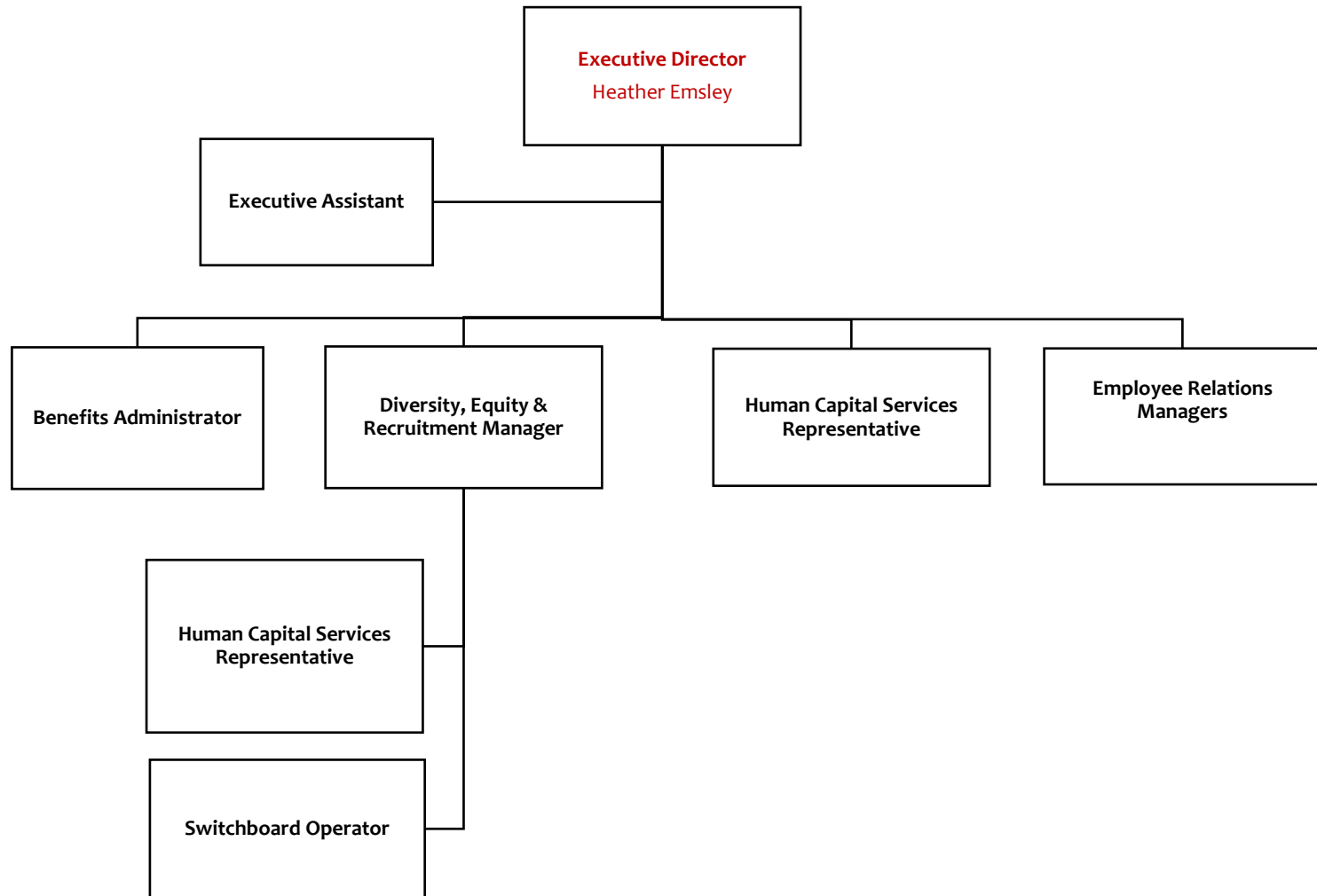
Superintendent Executive Support Team

- Communication Office
- Data Assessment Manager

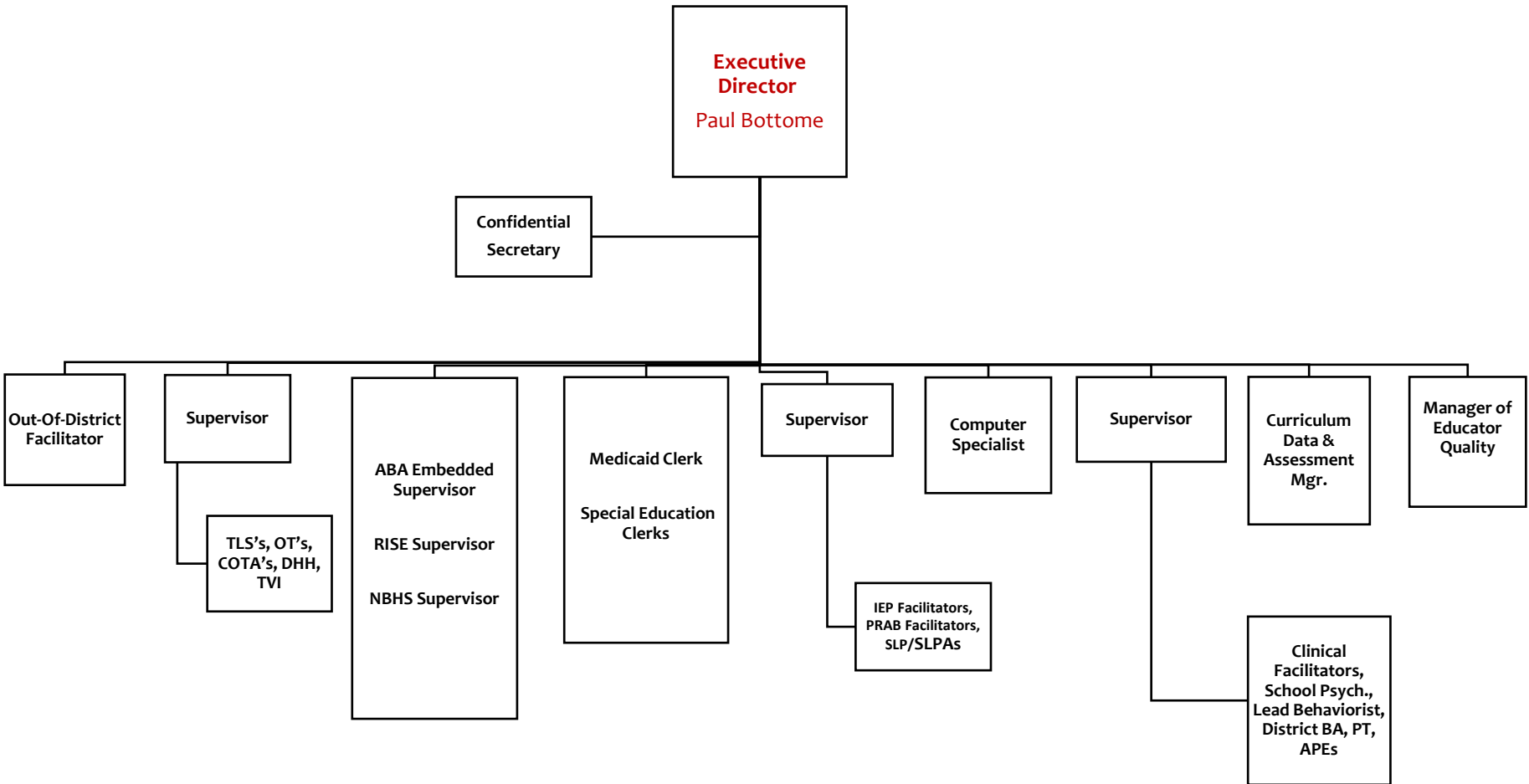
Office of School Performance



Human Capital Services



Executive Director Special Education



Executive Director Student Services

Executive Director of Student Services
Tammy Morgan

Administrative Assistant

Family Registration Manager

Wraparound Manager

Court Liaison

Attendance Officers

Health Services Manager

Guidance Dept.

Pupil Personnel Dept.

College Career and Readiness

Confidential Secretary

Nurses

CISA Specialist

Family Registration Specialist

PK, K-12 Screeners

Stability Housing Specialist

Administrative Assistant

Lead Wraparound Coordinator

Wrap Coordinators

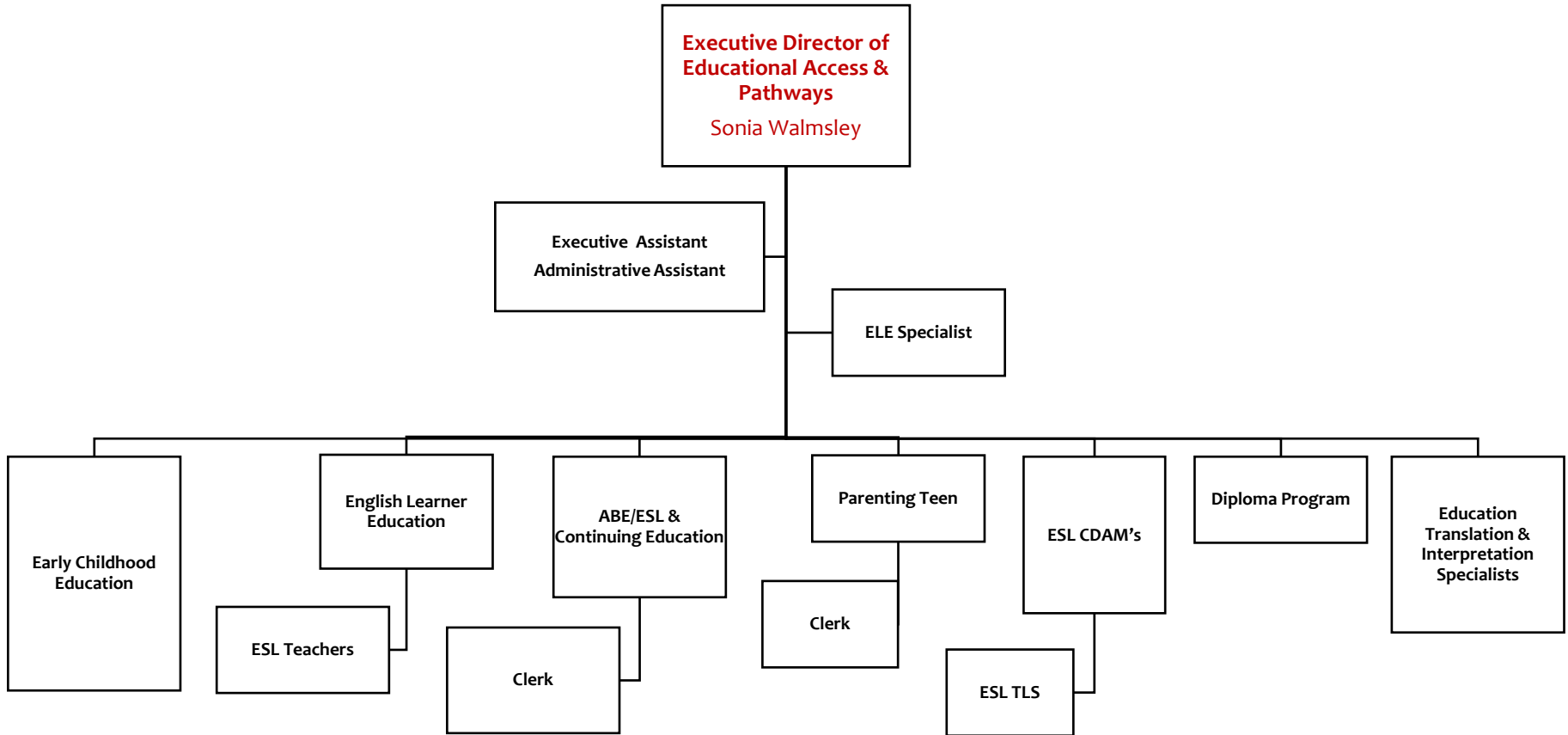
Family Engagement Specialist

Nursing Supervisor

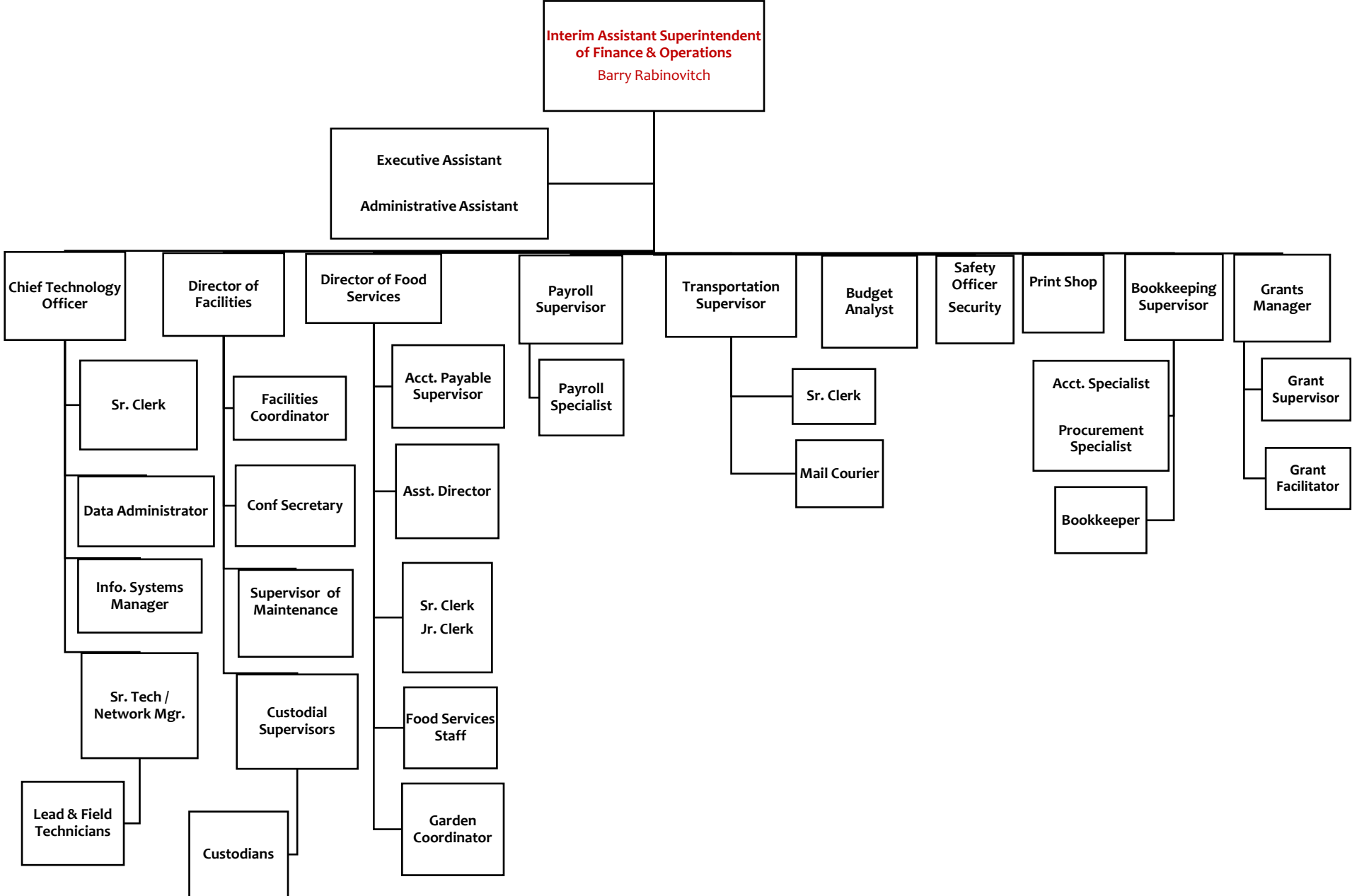
Nurses, Health Reps., Hearing & Vision Screeners, Clinical Nursing Facilitators

Jr. Clerk

English Learner Education



Finance and Operations



Strategic Initiatives & Partnerships

